

Key Facts and Statistics from the Hearing Loss Association of America (HLAA)

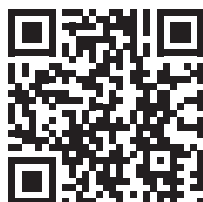


Hearing loss is a growing public health crisis affecting people of all ages.

Many people don't get their hearing tested or treated, even though untreated hearing loss can be connected to other serious health conditions and diminished quality of life.

The Hearing Loss Association of America (HLAA) is the leading voice for millions of Americans with, and at risk of, hearing loss. HLAA is dedicated to raising awareness, breaking down stigma and empowering all with advocacy, education and a nationwide network of support.

More Information and Resources



hearingloss.org/toolkit



Prevalence



Who's At Risk



Treatment



Employment

Hearing Loss by the Numbers

Prevalence

- More than **50 million Americans** have some degree of hearing loss. That's about

1 in 7 people in the U.S.
NIDCD and U.S. Census



- Hearing loss is the **3rd most common** chronic physical condition in the U.S., **twice as prevalent** as diabetes or cancer. *CDC*



- Hearing loss **is associated with other common health issues** such as diabetes and heart disease. *Healthy Hearing*

- Hearing loss is on the rise and is expected to affect **2.5 billion people worldwide** by 2050. *WHO*



Prevalence



Who's At Risk



Treatment



Employment

Protect Your Hearing



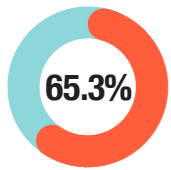
hearingloss.org/prevention

Hearing Loss by the Numbers

Who's At Risk

PEOPLE OF ALL AGES

- **One billion** young adults worldwide are at risk of permanent, avoidable hearing loss. *WHO*



- **65.3% (21.5 million)** of people **71 years or older** have hearing loss in the U.S. *JAMA*

- **We're all at risk** of noise-induced hearing loss. Power tools, sporting events, concerts and ear buds can cause permanent damage to hearing.

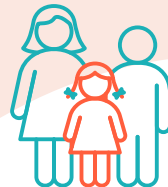
CHILDREN AND TEENS

- **98% of newborns** now get their hearing screened each year in the U.S., thanks to legislation that HLAA advocated for in 1999.



- **1 in 500 infants** are born with or develop hearing loss in early childhood. *CDC*

- **Early detection** of hearing loss in children is important **to avoid language and education delays**. *CDC*



- More than **one in 10 (5.1 million)** children and teens six to 19 years of age have some degree of hearing loss. *ASHA*



Prevalence



Who's At Risk



Treatment



Employment

MORE >

Who's At Risk (CONTINUED)

INDUSTRIAL WORKERS



- **30 million U.S. workers** are exposed to noise levels high enough to cause irreversible hearing loss. *CDC/NIOSH*

- **53%** of noise-exposed workers report **not wearing hearing protection** on the job. *CDC/NIOSH*



VETERANS

- **3.6 million U.S. veterans** receive benefits for hearing issues, making it the most common service-connected disability. *VA*
- **2.3M veterans** receive hearing loss benefits
- **1.3M veterans** receive tinnitus benefits



Prevalence



Who's At Risk



Treatment



Employment

Learn about HLAA's Veterans Across America Virtual Chapter (VAAVC)



hearingloss.org/veterans

Treatment

- Untreated hearing loss **is linked to depression, social isolation** and increased risk of **falls** in older adults.

NIDCD



- About **28.8 million** U.S. adults could benefit from hearing aids, but fewer than **1 in 5** of those use them. *NIDCD*

- People who do treat their hearing loss wait an average of **nine years** to get their first hearing aid after a diagnosis.

EAR and HEARING Journal



- As of 2022, about **183,100** adults and children in the U.S. have cochlear implants (CIs) to treat more severe hearing loss. *NIDCD*

Find Help



hearingloss.org/find-help



Prevalence



Who's At Risk



Treatment



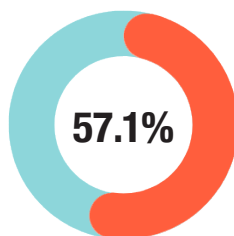
Employment

Employment



Despite the **Americans with Disabilities Act (ADA)** and other laws to protect people with hearing loss from discrimination, some employment disparities still exist.

- Only **57.1% of adults with hearing loss are employed**, compared to 73.3% of hearing people. *National Deaf Center*



\$23,481

\$31,272

- People with hearing loss earn about 25% less**; their mean wage was \$23,481, compared with \$31,272 for typical-hearing peers. *The Hearing Journal*

- Other situations not captured in data might include people with hearing loss leaving jobs prematurely due to communication difficulties or challenges getting hired.

Learn about Your Rights



hearingloss.org/know-your-rights



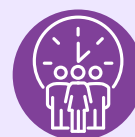
Prevalence



Who's At Risk



Treatment



Employment